

NEC Direct View LED-FA009i2 (0.95mm FA-Series Indoor)



NEC Direct View LED - Intelligent display solutions for a brighter world

The NEC FA Series direct view LED provides crystal clear images for the ultimate visual experience. With pixel spacing options of 0.95mm, 1.2mm, 1.5mm, 1.9mm, 2.5mm, 3.1mm & 3.8mm, the optimum display resolution can be achieved regardless of viewing distance; plus, the front serviceable design allows easy access and quick maintenance when needed. Designed for vibrant and colorful content visualization, the NEC direct view indoor LED series is the ideal solution for auditoriums, reception areas, retail stores, control and

meeting rooms, museums, broadcast studios and airports or train stations. NEC offers full design & planning services plus post installation support, ensuring you get a custom tailored solution allowing you to focus on what's most important - your business.

Benefits

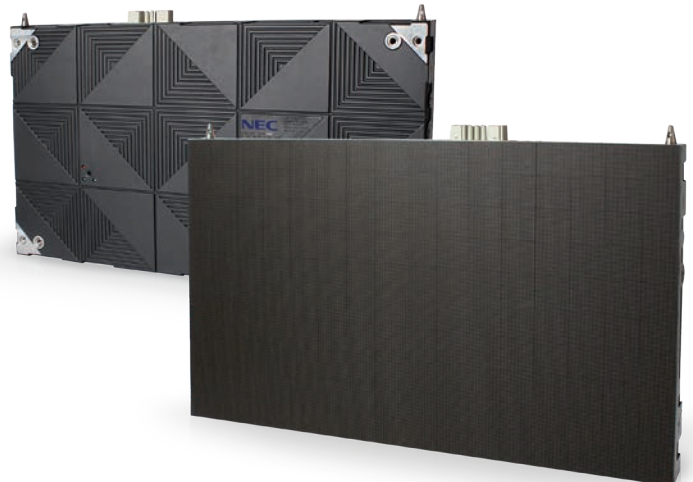
Each **LED Panel** can be configured with built in data and power redundancy ensuring the display remains operational in the event of a single controller or power supply fault

Modules are front serviceable allowing placement in difficult to access areas

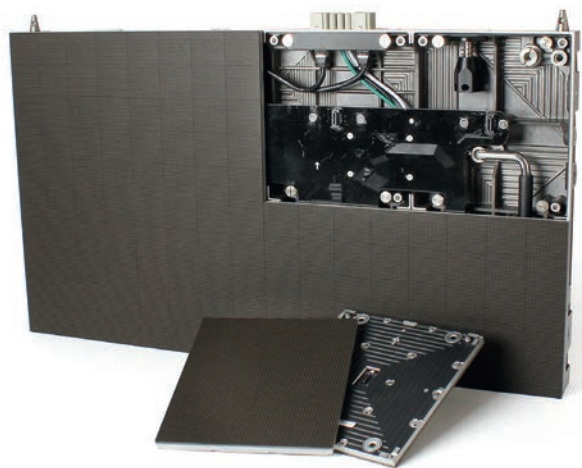
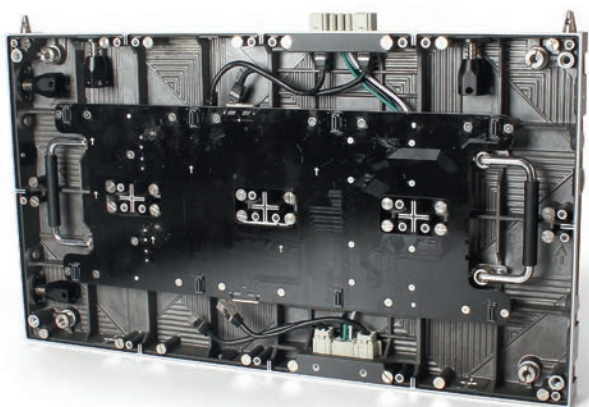
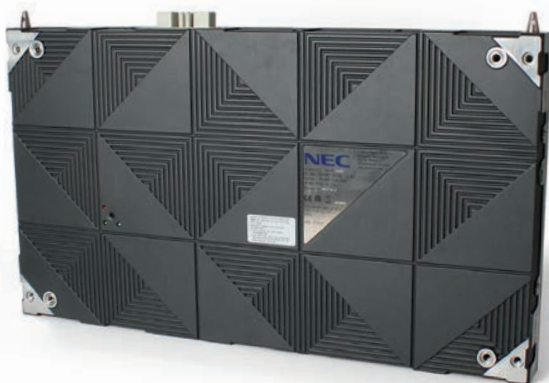
Pixel cards are upgradable to a finer pixel pitch. A Full HD 3.8mm display can be upgraded to 4K at a later date without changing the modules or mounting structure

Pixel cards are hot-swappable and can be replaced without turning the display off

Black SMD Multi-Color LED's provide a smooth surface, low reflectance and high contrast



NEC Direct View LED-FA009i2 (0.95mm FA Series Indoor) - Technical Specification



Direct View LED Kit		LED-FA009i2
Display	Panel Technology	Direct View LED
	Pixel Configuration	4-1 SMD (Black)
	Panel Resolution	640 x 360
	Aspect Ratio	16:9
	Pixel Pitch	0.95mm
	Brightness (typical)	600cd/m ²
	Contrast Ratio (typical)	5000:1
	Viewing Angle (typical)	70/70 horizontal / 70/70 vertical
	Dimming Capability	256 levels
	Color Processing	Up to 16 bit
	Displayable Colors	281 Trillion
	Refresh Rate	Up to 3840 Hz
CONNECTIVITY	Input Terminals Digital	2x 1000BaseT RJ-45
	External Control	RS232 / USB
POWER CONSUMPTION	On (typical)	75 Watts
	Max	140 Watts
PHYSICAL SPECIFICATIONS	Dimensions (W x H x D)	23.9 x 13.5 x 1.9 in / 608 x 342 x 49 mm
	Weight (Net)	19.4lbs / 8.8kg
ENVIRONMENTAL CONDITIONS	Operating Temperature	-4° to 104°F / -20° to 40°C
	Operating Humidity	10% to 80%
	Storage Temperature	-4° to 113°F / -20° to 45°C
	Storage Humidity	10% to 85%
	IP Rating	IP20
LIMITED WARRANTY		3 years

All rights reserved in favor of their respective owners. All hardware and software names are brand names and/or registered trademarks of the respective manufacturers. All specifications are subject to change without notice.